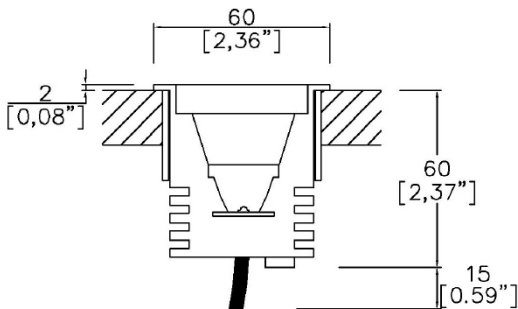


InGround60



InGround provides fully recessed uplight for interior and exterior installation. InGround products are Wet rated and include round and square variants in 1.57” and 2.36” trim.
Indoor tube, Soft ground mounting tube and concrete pour box installation available.
Available in 3 color temperatures and 5 beam angles. TRIAC/Phase, 0-10v/1-10v, DMX and DALI/digital dimming.



AIG60

LED Source	LED	LED	LED	LED	LED
CCT	3000K	3000K	3000K	3000K	3000K
Drive Current	350mA	350mA	350mA	350mA	350mA
Power inc Driver	4.75W	4.75W	4.75W	4.75W	4.75W
Beam Angle	8°	15°	25°	30°	10°x45°
Delivered Lumens	100	275	286	286	276
Delivered Intensisty cd	3519	1806	745	732	1517
Efficacy lm/w	21	58	60	60	58
Forward Volt	11.5V	11.5V	11.5V	11.5V	11.5V
CRI	≥90 CRI	≥90 CRI	≥90 CRI	≥90 CRI	≥90 CRI
Ingress Protection	IP66/67	IP66/67	IP66/67	IP66/67	IP66/67
Impact Protection	IK10	IK10	IK10	IK10	IK10

Project Ref: _____ Location Ref: _____

Specify fixture part number (All boxes must be filled in to correctly order)

AIG60						
--------------	--	--	--	--	--	--

CCT _____

27	2700K
30	3000K
40	4000K

Finish _____

BSS	Brushed Stainless Steel
BRZ	Flamed Bronze
ABZ	Antique Bronze (Interior Only)

Beam Angles _____

8	8 (Accessories cannot be used with 8°)
15	15
25	25
30	30
10x45	10x45 (Accessories cannot be used with 10°x45°)

Dimming Protocol^ _____

S	Non-Dimmable
P	TRIAC/Phase (120V ONLY) (25-10% Minimum Dimming)***
LP	Lutron Forward Phase 2-Wire (1% Dimming) (120V ONLY)
ESS	EcoSystem 5-Series (5% Dimming)
LHE	EcoSystem Hi-Lume Fade to Black (1% Dimming)
LAE	Lutron 3-Wire Hi-Lume (1% Dimming)
LHP	Lutron Hi-Lume Premier EcoSystem (0.1% Dimming)
A	0-10V (15-5% Minimum Dimming)***
ESD	EldoLED Solo DALI2 (0.1% Dimming)
EED	EldoLED Eco DALI2 (1% Dimming)
ESA	EldoLED Solo 0-10V/1-10V (0.1% Dimming)
EEA	EldoLED Eco 0-10V/1-10V (1% Dimming)
B	Bluetooth**

Accessories _____

XX	Not required
IG60-IN-SD	Glare Shield
IG60-IN-EL	Elliptical Beam Effect
IG60-IN-SQ	Square Beam Effect
IG60-IN-SL	Narrow Slot Effect
IG60-IN-HC	Honeycomb Louver
TH381	IP68/Wet Connector

Installation Methods _____

IG60-SGTUBE	Soft Ground Mounting Tube
IG60-Tube	Indoor Tube
IG60-CB	Concrete Pour Box

For exterior use an IP68/Wet connector is required.

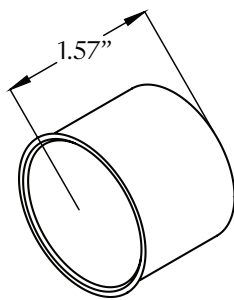
^Not all power supplies are available for single connection, some require series connection with multiple fittings. Consult Lucent Lighting Inc for more information.

All Lucent InGround products are supplied as standard with 5ft (1.5m) lead

Installation Methods:

IG60-TUBE
Indoor Tube:

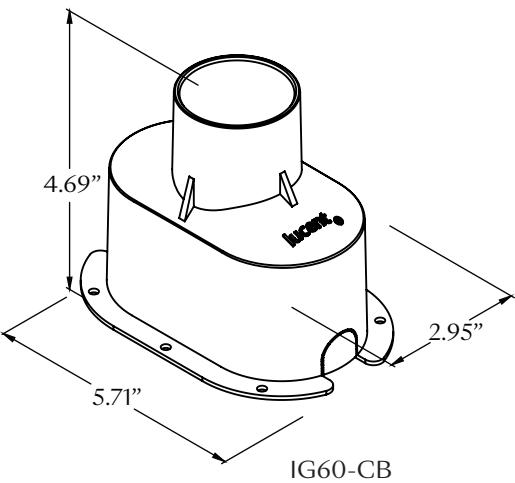
For installation in indoor floor or wall locations
Cut out: 2.09" (53mm) Ø



IG60-TUBE

IG60-CB*
Concrete pour box:

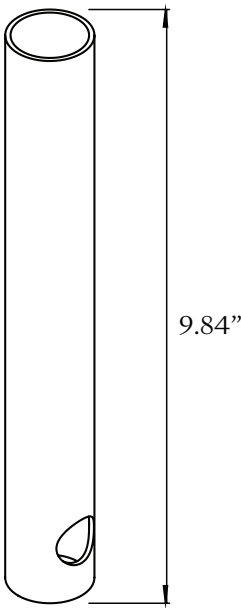
For installation in concrete floor
*Driver to be remote



IG60-CB

IG60-SGTUBE
Soft Ground Mounting Tube:

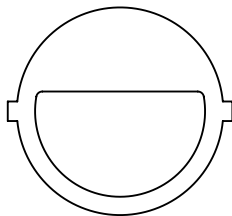
For installation in outdoor soft ground locations



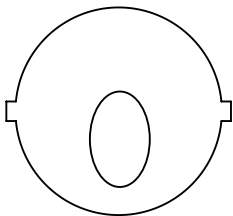
IG60-SGTUBE

Accessories:

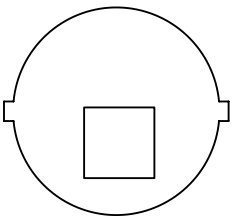
Accessories cannot be used with 8° beam angles or 10°x45° optic.



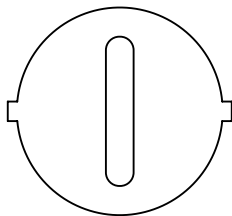
IG60-IN-SD



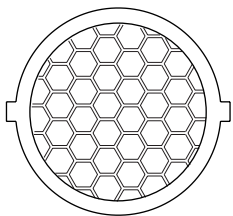
IG60-IN-EL



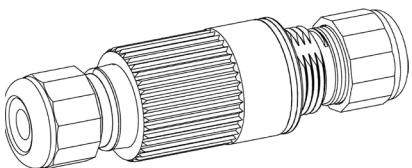
IG60-IN-SQ



IG60-IN-SL



IG60-IN-HC



TH381

Technical Details

*Custom color requires a paint chip or RAL code and may increase price and lead-time

It is the responsibility of the specifier/integrator/installer to check and ensure compatibility of any control equipment used. Additional cabling may be required depending on the dimming protocol specified.

**Bluetooth (wireless) is a communication protocol. The exact dimming protocol must be confirmed to allow the selection of suitable drivers or Bluetooth devices.

***Non specific driver type, dimming performance depending on exact driver used. Contact Lucent Lighting for more information.

^ Depth indicated is the minimum recess depth for the luminaire with a remote mounted LED driver. Installing a driver through either the luminaire cut-out or installation kit may require additional recess depth, please refer to the relevant installation instructions prior to purchase.

First Fix Requirement. Luminaire comprised of fixture body with ceiling trim and installation kit, which is to be fitted into the ceiling once finished. Ensure correct alignment of the installation kit before final assembly (see luminaire installation instructions for details)

Location. Tested from underside of the ceiling.

Data correct at time of publishing. It is the policy of Lucent Lighting to continually review and improve its products and therefore reserve the right to change any details of product or withdraw specifications without prior notice.

This specification sheet supersedes all previous versions.

All intellectual property rights pertaining to the product described above and to this document are owned by or licensed to Lucent Lighting, Incorporated. Lucent Lighting reserves the right to take whatever action is necessary to protect its intellectual property, patents and trademarks

Please notify Lucent Lighting Inc. in accuracies. E&OE



Light efficiency:

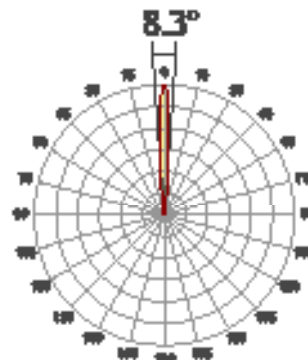
21 Lumen/Watt

Light quality:

CRI: 92.3

Color temperature:

3000 K



Product name:

InGround 60, 3000K, 8", 350mA

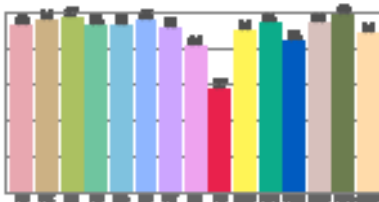
Item number:

IG60-30-8-350mA

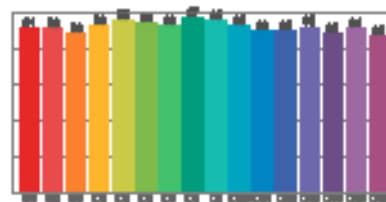
Delivered information for above fixture and LED combination.

Output: 59.9 Lumen Peak intensity: 3519 cd Power consumption: 4.7

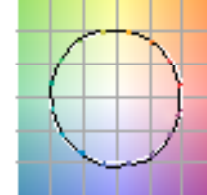
CRI values



TMC C Values

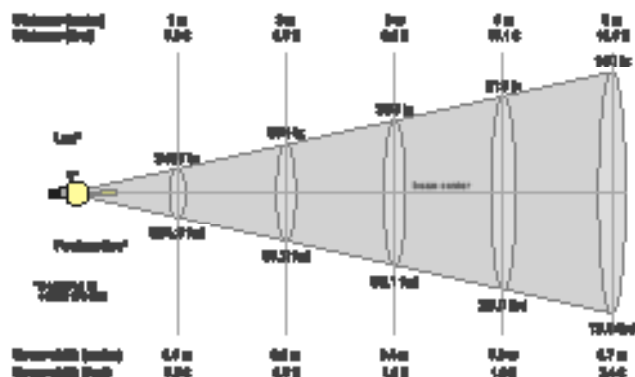


Color vector graphics



Color-render	Color-render	Color-render	Color-render	Color-render	Color-render	Color-render	Color-render	Color-render	Color-render	Color-render
CCT	CRI	CRI R9	TMC R17	TMC R99	CRI	X	Y	u	v	Z
3000 K	92.3	67.3	91.8	100.2	92.3	0.437	0.404	0.268	0.348	-0.0005

Beam details



Beam angle

Beam angle 10°	Field angle 10°	Cut-off angle 2.4°
8.3°	14.3°	19.3°

Beam intensities

Peak intensity	Int. ratio to 120° cone	Int. ratio to 60° cone
3519 cd	88.8%	87.8%

Beam intensities from 1-20m

1m	2m	3m	4m	5m	6m	7m	8m	9m	10m	11m	12m	13m	14m	15m	16m	17m	18m	19m	20m
3.3ft	6.6ft	9.8ft	13.1ft	16.4ft	19.7ft	23ft	26.2ft	29.5ft	32.8ft	36.1ft	39.4ft	42.7ft	45.9ft	49.2ft	52.5ft	55.8ft	59.1ft	62.3ft	65.6ft
3497lx	874lx	389lx	219lx	140lx	97lx	71lx	55lx	43lx	35lx	29lx	24lx	21lx	18lx	16lx	14lx	12lx	11lx	10lx	9lx
324.9cd	81.2cd	36.1cd	20.3cd	13cd	9cd	6.6cd	5.1cd	4cd	3.2cd	2.7cd	2.3cd	1.9cd	1.7cd	1.4cd	1.3cd	1.1cd	1cd	0.9cd	0.8cd

The above information is for 3000K colour temperature, for specific module information please see LED spec located on our website

For information regarding other colour temperatures please use the following factors for lumen output and candelas:

2700K = 0.82

4000K = 1.11

Light efficiency:

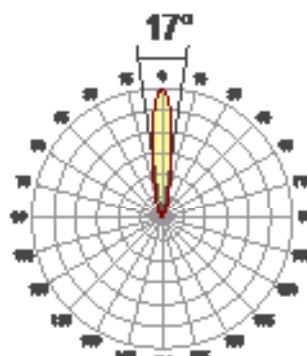
58 Lumen/Watt

Light quality:

CRI: 92.0

Color temperature:

3000 K



Product name:

InGround 60, 3000K, 15°, 350mA

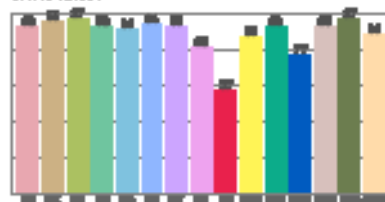
Part number:

IG60-30-15-350mA

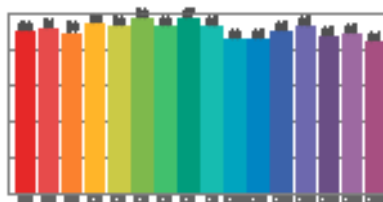
Delivered information for above fixture and LED combination.

Output: 275 Lumen Peak intensity: 1806 cd Power consumption: 4.7

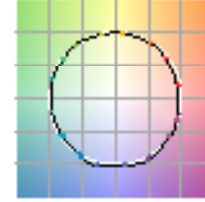
CRI values



TM30-0 Values

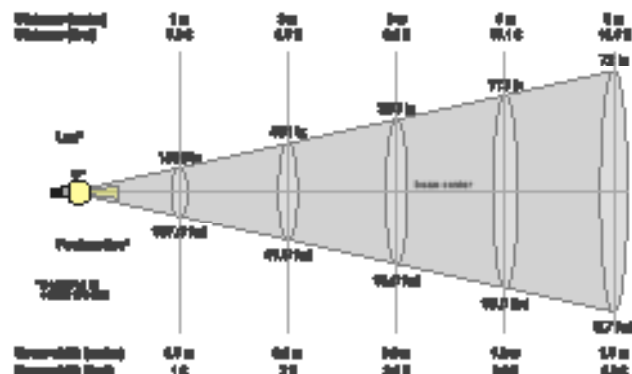


Color vector graphics



Color vector	Color vector	Color vector	Color vector	Color vector	Color vector	Color vector	Color vector	Color vector	Color vector	Color vector
CCT	CRI	CRI R9	TM30-0 R1	TM30-0 R2	CRI	X	Y	Z	Y	Z
3000 K	92.0	67.2	90.2	90.2	90.2	0.437	0.404	0.247	0.247	0.0911

Beam details



Beam angles

Beam angle 50%	Field angle 50%	Cut-off angle 2.4%
17°	48.5°	89°

Beam intensities

Peak intensity	Int. ratio to 120° beam	Int. ratio to 50° beam
1806 cd	88.1%	88.4%

Beam intensities from 1-20m

1m	2m	3m	4m	5m	6m	7m	8m	9m	10m	11m	12m	13m	14m	15m	16m	17m	18m	19m	20m
3.3ft	6.6ft	9.8ft	13.1ft	16.4ft	19.7ft	23ft	26.2ft	29.5ft	32.8ft	36.1ft	39.4ft	42.7ft	45.9ft	49.2ft	52.5ft	55.8ft	59.1ft	62.3ft	65.6ft
1803lx	451lx	200lx	113lx	72lx	50lx	37lx	28lx	22lx	18lx	15lx	13lx	11lx	9lx	8lx	7lx	6lx	6lx	5lx	5lx
167.5fc d	41.9fc	18.6fc	10.5fc	6.7fc	4.7fc	3.4fc	2.6fc	2.1fc	1.7fc	1.4fc	1.2fc	1fc	0.9fc	0.7fc	0.7fc	0.6fc	0.5fc	0.5fc	0.4fc

The above information is for 3000K colour temperature, for specific module information please see LED spec located on our website

For information regarding other colour temperatures please use the following factors for lumen output and candelas:

2700K = 0.82

4000K = 1.11

Light efficiency:

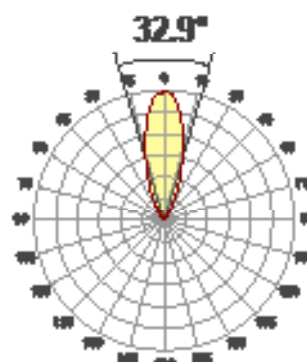
60 Lumen/Watt

Light quality:

CRI: 91.8

Color temperature:

3000 K



Product name:

InGround 60, 3000K, 25°, 350mA

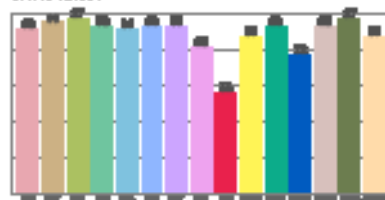
Part number:

IG60-30-25-350mA

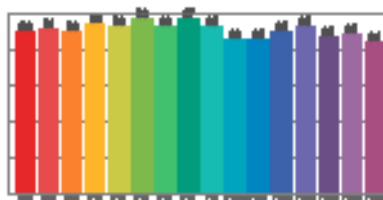
Delivered information for above fixture and LED combination.

Output: 286 Lumen Peak intensity: 745 cd Power consumption: 4.7

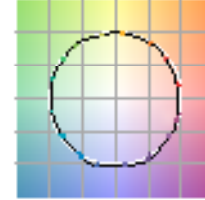
CRI values



TM30-08 values

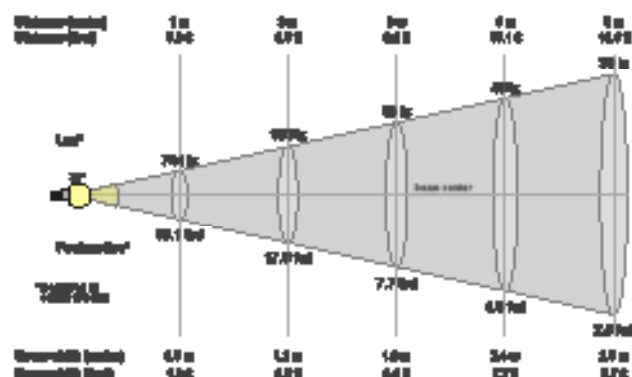


Color vector graphics



Color vector	Color vector	Color vector	Color vector	Color vector	Color vector	Color vector	Color vector	Color vector	Color vector	Color vector
CCT	CRI	CRI R9	TM30-08	TM30-08	CRI	X	Y	Z	U	V
3000 K	91.8	91.8	91.8	91.8	91.8	0.437	0.404	0.247	0.348	0.0016

Beam data



Beam spread

Beam angle 50%	Field angle 50%	Cut-off angle 2.4%
32.9°	32.9°	17.8°

Beam intensities

Peak intensity	Int. ratio to 120° cone	Int. ratio to 60° cone
745 cd	88.2%	88.4%

Beam intensities from 1-20m

1m	2m	3m	4m	5m	6m	7m	8m	9m	10m	11m	12m	13m	14m	15m	16m	17m	18m	19m	20m
3.3ft	6.6ft	9.8ft	13.1ft	16.4ft	19.7ft	23ft	26.2ft	29.5ft	32.8ft	36.1ft	39.4ft	42.7ft	45.9ft	49.2ft	52.5ft	55.8ft	59.1ft	62.3ft	65.6ft
744lx	186lx	83lx	46lx	30lx	21lx	15lx	12lx	9lx	7lx	6lx	5lx	4lx	4lx	3lx	3lx	3lx	2lx	2lx	2lx
69.1fcd	17.3fcd	7.7fcd	4.3fcd	2.8fcd	1.9fcd	1.4fcd	1.1fcd	0.9fcd	0.7fcd	0.6fcd	0.5fcd	0.4fcd	0.4fcd	0.3fcd	0.3fcd	0.2fcd	0.2fcd	0.2fcd	0.2fcd

The above information is for 3000K colour temperature, for specific module information please see LED spec located on our website

For information regarding other colour temperatures please use the following factors for lumen output and candelas:

2700K = 0.82

4000K = 1.11

Light efficiency:

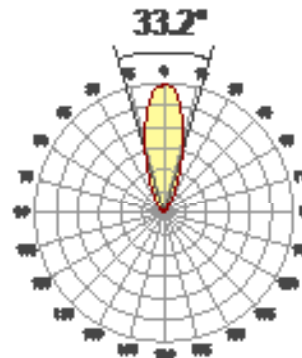
60 Lumen/Watt

Light quality:

CRI: 91.8

Color temperature:

3000 K



Product name:

InGround 60, 3000K, 30°, 350mA

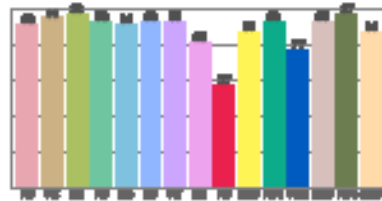
Item number:

IG60-30-30-350mA

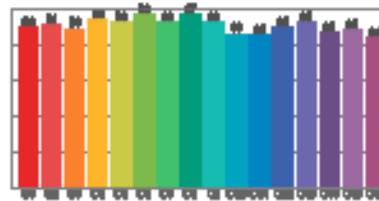
Delivered information for above fixture and LED combination.

Output: 286 Lumen Peak intensity: 732 cd Power consumption: 4.7

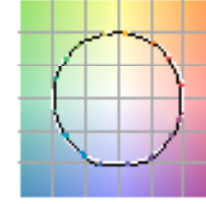
CRI R values



TM30-08 Values

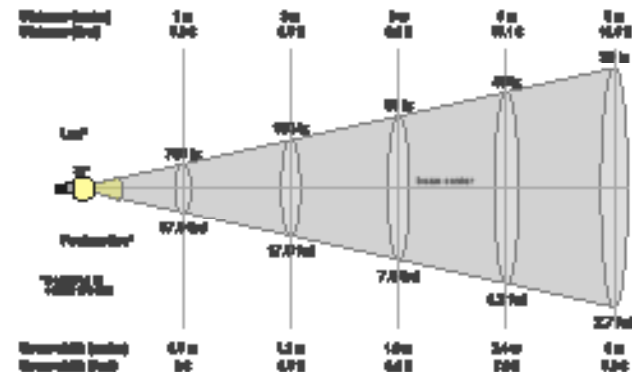


Color vector graphics



Color-renderer	Color-renderer index	Color-renderer index	Color-renderer index	Color-renderer index	Color-renderer index	Color-renderer index	Color-renderer index	Color-renderer index	Color-renderer index	Color-renderer index
CCT	CRI	CRI Ra	TM30-08	TM30-08	CRI	x	y	u	v	Sum
3000 K	91.8	91.8	90.2	91.8	91.8	0.437	0.404	0.247	0.248	0.0016

Beam details



Beam spread

Beam angle 50%	Field angle 90%	Cutoff angle 2.0%
33.2°	33.2°	17.8°

Beam intensities

Peak intensity	Int. ratio to 120° beam	Int. ratio to 90° beam
732 cd	91.8%	91.8%

Beam intensities from 1-20m

1m	2m	3m	4m	5m	6m	7m	8m	9m	10m	11m	12m	13m	14m	15m	16m	17m	18m	19m	20m
3.3ft	6.6ft	9.8ft	13.1ft	16.4ft	19.7ft	23ft	26.2ft	29.5ft	32.8ft	36.1ft	39.4ft	42.7ft	45.9ft	49.2ft	52.5ft	55.8ft	59.1ft	62.3ft	65.6ft
731lx	183lx	81lx	46lx	29lx	20lx	15lx	11lx	9lx	7lx	6lx	5lx	4lx	4lx	3lx	3lx	3lx	2lx	2lx	2lx
67.9fcd	17fcd	7.5fcd	4.2fcd	2.7fcd	1.9fcd	1.4fcd	1.1fcd	0.8fcd	0.7fcd	0.6fcd	0.5fcd	0.4fcd	0.3fcd	0.3fcd	0.3fcd	0.2fcd	0.2fcd	0.2fcd	0.2fcd

The above information is for 3000K colour temperature, for specific module information please see LED spec located on our website

For information regarding other colour temperatures please use the following factors for lumen output and candelas:

2700K = 0.82

4000K = 1.11

Light efficiency:

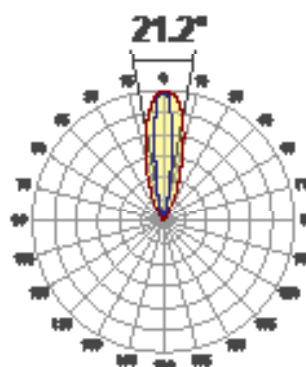
58 Lumen/Watt

Light quality:

CRI: 91.8

Color temperature:

3000 K



Product name:

InGround 60, 3000K, 10"x45", 350mA

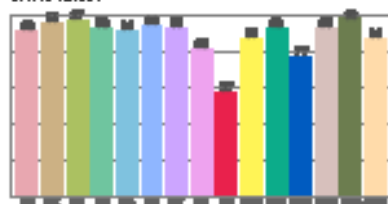
Item number:

IG60-30-10x45-350mA

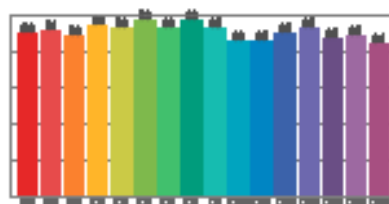
Delivered information for above fixture and LED combination.

Output: 276 Lumen Peak intensity: 1517 cd Power consumption: 4.7

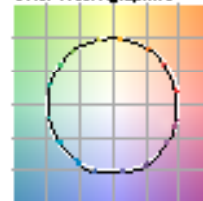
CRI R values



TM30-15 Values

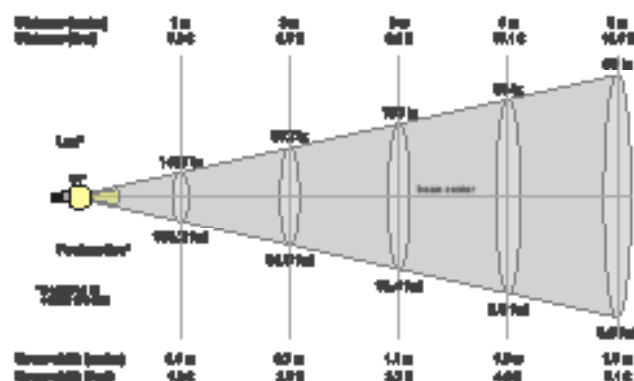


Color vector graphics



Color-renderer	Color-renderer index	Red-renderer	Color-shift	Color-shift	Color-shift index	Color-renderer index	Color-renderer index	Color-renderer	Color-renderer	Color-renderer
CCT	CRI	CRI R9	TM30-15	TM30-15	CRI	X	Y	u	v	Sum
3000 K	91.8	88.7	99.2	99.7	99.4	0.437	0.404	0.247	0.347	0.0070

Beam details



Beam specs

Beam angle 50%	Field angle 50%	Cutoff angle 2,0%
21.2°	20.4°	61.2°

Beam intensities

Peak intensity	Int. ratio to 120° cone	Int. ratio to 60° cone
1517 cd	100.0%	100.0%

Beam intensities from 1-20m

1m	2m	3m	4m	5m	6m	7m	8m	9m	10m	11m	12m	13m	14m	15m	16m	17m	18m	19m	20m
3.3ft	6.6ft	9.8ft	13.1ft	16.4ft	19.7ft	23ft	26.2ft	29.5ft	32.8ft	36.1ft	39.4ft	42.7ft	45.9ft	49.2ft	52.5ft	55.8ft	59.1ft	62.3ft	65.6ft
1487lx	372lx	165lx	93lx	59lx	41lx	30lx	23lx	18lx	15lx	12lx	10lx	9lx	8lx	7lx	6lx	5lx	5lx	4lx	4lx
138.2fc d	34.5fc d	15.4fc d	8.6fc d	5.5fc d	3.8fc d	2.8fc d	2.2fc d	1.7fc d	1.4fc d	1.1fc d	1fc d	0.8fc d	0.7fc d	0.6fc d	0.5fc d	0.5fc d	0.4fc d	0.4fc d	0.3fc d

The above information is for 3000K colour temperature, for specific module information please see LED spec located on our website

For information regarding other colour temperatures please use the following factors for lumen output and candelas:

2700K = 0.82

4000K = 1.11